



#### SAVINGS AND SPECIFICATIONS

**Location:** Mountain View, California

**SYSTEM SIZE:** 1.6 MW

**ENERGY OUTPUT:** 2,611,719 kWh per year

**SAVINGS:** \$393,000+ annually

**RESULTS:** CO2 emissions reduced by 3.6 million pounds per year, (equivalent to 4.28 million car miles/year)

**MODULE TYPE:** Sharp ND-208U1

**NO. OF MODULES:** 10,330 (rooftops and carports)

**PITCH ANGLE:** Varies by installation

**COVERAGE:** 200,000 square feet

Suntech Solar Solutions' 1.6 megawatt solar campus saves the tech leader over \$390K annually and helps Google build a bright future.

## Innovative Solar Energy Design from Suntech Energy Solutions Powers the Googleplex

**“Google values the time our people spend here on our campus,”** says Robyn Beavers, leader of Corporate Environmental Programs for the Internet’s leading automated search technology company. “Our Googlers invest themselves heart and soul, and it’s important to the company to make sure they’re appreciated with a beautiful and appealing environment. It’s not a traditional corporate campus. It’s more of a home—healthy, clean, and attractive. We want the best for our people. We look at clean solar energy as an amenity that helps us meet that standard. So we’re very pleased with the solar energy installation built for us by EI Solutions.”

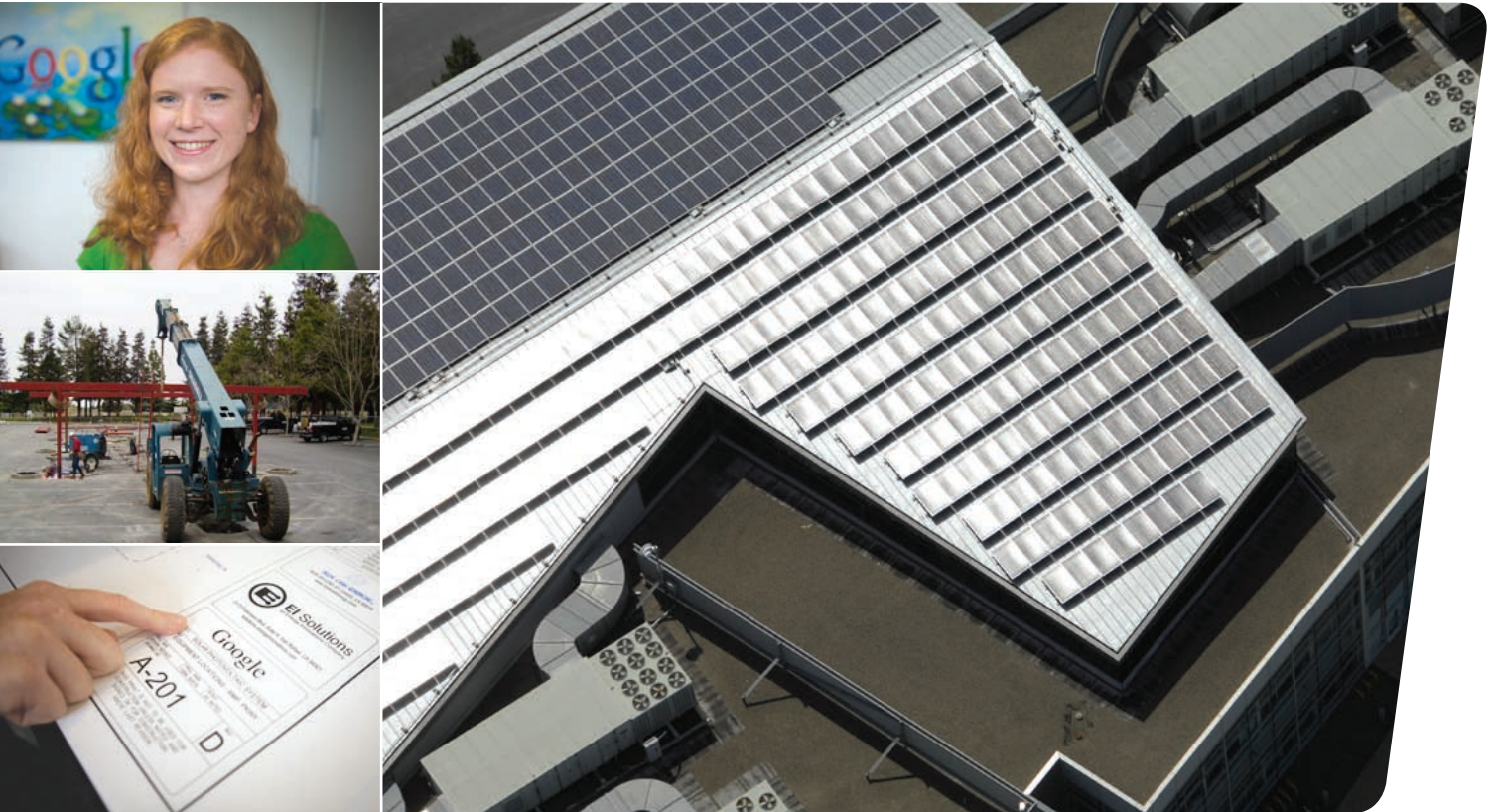
Ten thousand people strong and still growing, Google’s headquarters—the Googleplex—offered some daunting construction challenges for a solar contractor. Johann Niehaus, Suntech Solar Solutions’ Director of Project Engineering, was putting it mildly when he called it “an unusual project.” There were installations on six existing buildings, some of which were two decades old and unusual project.” There were installations on six existing buildings, some of which were two decades old and needed re-roofing before the solar construction, plus new construction of photovoltaic parking canopies, all in a



distributed layout. “We had to approach it building-by-building,” Johann says, “accounting for different roof types, various pitch angles, different orientations of the buildings, and unique shading problems that all had to be factored in to the design.”

### No Injuries, No Interruptions

With their own rapid growth and performance uppermost in



Suntech Energy Solutions can help you get all the advantages of a customized solar electricity solution. We match your goal with our proven skills, experience, integrity and versatility to ensure a no-hitches installation, the maximum and earliest return on your investment, and reliability engineered to the highest standard.

Our comprehensive planning and execution process begins with a thorough assessment of your needs and potential. Through design, engineering, sourcing, finance, installation and maintenance, we tailor our efforts to suit the unique requirements and opportunities of your site, your company or institution. We can help you navigate the Federal, state and municipal incentives processes; design a net cash flow that's positive from the first day; and

mind, Google asked Suntech Energy Solutions to pass another unusual test: meet the deadline with no interruptions, and work on Google's round-the-clock schedule. Matt LeDucq, Suntech Energy Solutions' on-site Construction Manager, remembers, “The task was to design and install the entire project—7,830 modules and tens of thousands of feet of wire and rail, all loaded onto the various roofs, plus 2,500 more on carports in the parking lot—with minimal disturbance. We put together a great team of subcontractors, and did about 30% of the module installations on a graveyard shift to minimize the disruptions to Google's day-to-day work. And we had no injuries. That's always paramount for us. Google was very attentive to communicating the project goals and status internally so their people knew what was happening. It was eleven months from the drawing board to going live, with no significant problems.”